

## COUNTERFEIT AVOIDANCE

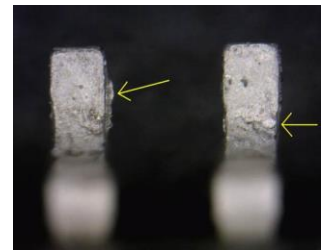
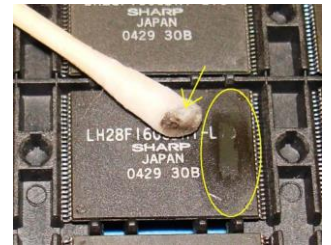


### Understanding the Real Problem

As long as counterfeiters are able to profit from creating and selling fake electronic components, keeping these substandard parts out of the supply chain will remain one of the greatest challenges faced by the industry. That is because the risks associated with counterfeit and otherwise substandard parts working their way through the supply chain can, best case, result in program and product delays and cost overruns that can harm a company's reputation and lose them business and, worst case, cause catastrophic failure that can result in loss of life.

Unfortunately, detecting these parts requires a certain expertise and commitment that many distributors simply don't possess. Without comprehensive, standardized inspections and varying levels of testing, substandard parts will inevitably be missed and shipped to contract manufacturers, OEMs and defense contractors. The issue is further complicated by the fact that counterfeiters regularly invent new methods of disguising their handiwork, which distributors such as Lintech Components must also be able to detect—as these new methods will inevitably proliferate.

*Blacktopped Part*



*Resoldered Lead*

### The Lintech Solution

When a manufacturer's certification of compliance is not available, which is not uncommon with older discontinued product, it is up to the distributor to ensure the quality and authenticity of a component. Lintech Components does this via a series of measures.

First, we prescreen all sources thoroughly and buy only from our scrubbed authorized vendor list. Once the component comes into our facility, Lintech follows a set of defined inspection and testing processes that meet company and industry standards as well as customer requirements. As an industry leader in state-of-the-art counterfeit mitigation, Lintech Components developed one of the first definitive inspection procedures, Lintech Component Authenticity Protection Program (CAPP), which we offer to customers who are not bound to compliance with other standards. Lintech Components can also screen components in accordance with customer-specific standards or industry standards including:

- DFARS Part 252.246-7007 Contractor Counterfeit Electronic Part Detection and Avoidance Systems
- SAE Aerospace Standard AS6081 for distributors for Fraudulent/Counterfeit Electronic Parts: Avoidance, Detection, Mitigation, and Disposition
- SAE AS6171 test methods standard for identifying suspect counterfeit parts via an affiliated, ISO 17025 accredited test lab
- IDEA-STD-1010 Acceptability of Electronic Components Distributed in the Open Market
- AC 00-56B aircraft parts Distributor Accreditation Program: Identification of counterfeit and suspected unapproved parts

In addition, Lintech Components stays abreast of burgeoning counterfeiting techniques and materials and then utilizes or develops new methods of detection.

## Component Authenticity Services

Lintech offers the most comprehensive range of component authenticity services. Our highly trained inspectors and engineers from Lintech Components, and our affiliated and fully certified laboratory, test and inspect parts to ensure quality and authenticity in accordance with customer specifications.



- External Visual Inspection
- Physical Dimension Inspection
- Marking Permanency Inspection
- Component Surface/Blacktop Inspection
- X-Ray Die Bond and Frame Inspection
- XRF Spectrum Analysis
- Decapsulation/Delidding
- Scanning Electron Microscopy Inspection
- Electrical Curve Tracing
- Group A Electrical Testing at Temperature
- Destructive Physical Analysis (DPA)
- Material Analysis/Device Composition
- Blank Verification
- Engineering Analysis
- Lintech OCM Die Database Comparison
- Comprehensive Detail Report
- Manufacturer's Certificate of Compliance, where applicable

**Lintech Components is a best-in-class distributor specializing in hard-to-find military and commercial electronic components *screened to ensure quality and authenticity.***

## Lintech Qualifications

In order to ensure the quality of tens of thousands of parts, year after year, a company must adhere to consistent quality management processes and documented procedures. A testament to Lintech Components' total quality management approach is our ability to qualify for and maintain up-to-date certifications to all critical industry standards. Lintech meets and exceeds all applicable U.S. Government standards (including stringent military and aerospace standards) for quality and authenticity as evidenced by our ISO 9001 and AS9120 certifications.

